



MONTHLY MEMBERSHIP PROGRESS REPORT

District 26 M5

Results as of: 03/31/2018

GMT: JOE AL PICONE

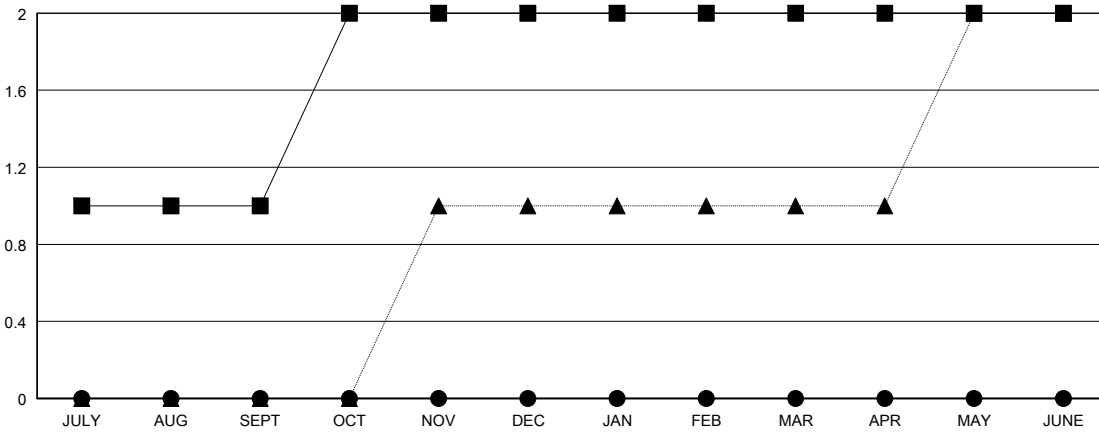
LOCATION MISSOURI

GMT CA

Clubs			
RESULTS FOR 2017-2018			
QUARTER	NEW CLUB GOAL	NEW CLUBS	DROPPED CLUBS
JULY/AUG/SEPT	1	0	0
OCT/NOV/DEC	1	0	1
JAN/FEB/MAR	0	0	0
APR/MAY/JUNE	0	0	0

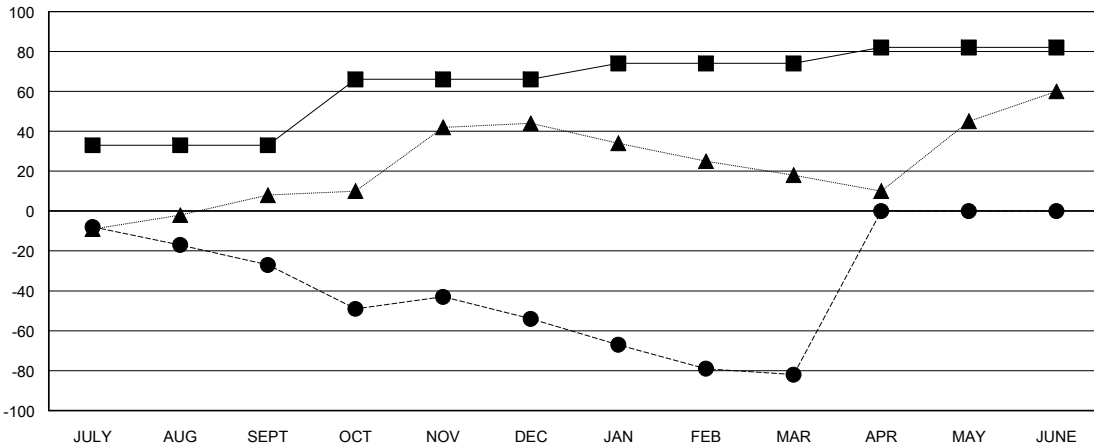
Members			
RESULTS FOR 2017-2018			
QUARTER	MEMBER GROWTH NET GOAL	MEMBER GROWTH ACTUAL	DROPPED MEMBERS ACTUAL (including transfers)
JULY/AUG/SEPT	33	24	51
OCT/NOV/DEC	33	25	47
JAN/FEB/MAR	8	22	43
APR/MAY/JUNE	8	0	0

GOALS AND ACTUAL NEW CLUBS CUMULATIVE



- - CURRENT YEAR GOALS FOR NEW CLUBS
- - CURRENT YEAR ACTUAL NEW CLUBS
- ▲ - LAST YEAR ACTUAL NEW CLUBS

GOALS AND ACTUAL MEMBERS CUMULATIVE



- - MEMBER GROWTH NET GOAL
- - MEMBER GROWTH ACTUAL
- ▲ - LAST YEAR MEMBERSHIP ACTUAL

DROPPED CLUBS: 1

22 CLUBS OF 50 ADDED 1 OR MORE NEW MEMBERS

GENDER DISTRIBUTION	
MALE	789 (67.26%)
FEMALE	384 (32.74%)
Women Percentage Fiscal Year Goal: 35%	

DROPPED MEMBERS	
DECEASED	20
CLUB CANCELLED	4
OTHER	117
TOTAL	141

[CLICK HERE FOR CUMULATIVE MEMBERSHIP DATA](#)

TOTAL FAMILY UNIT MEMBERS	251
FAMILY MEMBERS PAYING HALF DUES	130